

Parents and grandparents today have not had a lifetime of artificial EMF exposure, but children today cannot escape it. This map describes some of the risks specific to infancy and childhood and offers links to some precautionary steps parents may take.

Kids and robot siblings

EMF AND CHILDREN
(CHILDHOOD AND ADOLESCENT EXPOSURES)

[School Wireless and Epidemic of Brain Damage](#)

[Organizations Against School WiFi](#)

[Ban Handheld Devices for Children](#)

[Dr. Belpomme: Children and EMF](#)

[5G: Next Great Experiment on Children](#)

[Wireless and Children](#)

[Protect Your Kids](#)

[Exposure Guidelines](#)

Home: [Oscillatorium](#)
Newest version [this map](#)
Date of this update: 01-21-18

FACTORS IN VULNERABILITY

- Lower body weight
- Thinner skull
- Less efficient blood brain barrier
- Developing nervous system
- Greater water content of tissues
- Longer exposure over lifetime

COMMON CHILDHOOD EXPOSURES

PRENATAL, NEONATAL EXPOSURES
Prenatal ultrasound
Parent's use of wireless communication
Infant monitoring devices, incubators

HOME RADIOFREQUENCY EXPOSURES
DECT phones, wireless computers, etc.
Smart meters and appliances
WiFi, wireless games and toys

HOME MAGNETIC, ELECTRICAL EXPOSURES
Power Lines, transformers
Dirty electricity
Wiring errors, ungrounded circuits
Appliances, transformers, chargers, motors
Automobile mixed, often strong fields

SCHOOL ALL EMF EXPOSURES
Wiring errors
Dirty electricity
Lighting fixtures
WiFi, mobile devices, smart boards
Cell towers and antennas
RFID tracking devices
Electrical switching rooms, elevators, motors

COMMUNITY EXPOSURES
Smart grid meters, collectors
Cell towers and antennas, stores
WiFi hot spots
Mobile communication devices
Scanners



[Children's Health](#)
[Children, Neurodevelopment](#)
[Autism](#)
[Genotoxic Effects](#)
[Fetal, Neonatal Effects](#)
[Section 9: Neurology, Behavior](#)
[Section 12: Childhood Leukemia](#)

[BioInitiative 2017](#)

[BioInitiative 2012](#)

Risks

[Brain cancer](#)
[A Child's Brain](#)
[EMF and ADHD](#)
[Cognitive changes](#)
[Childhood leukemia](#)
[Behavioral problems](#)
[Cancer, mental health](#)
[Toddler iPad Addiction](#)
[Poor sleep, less sleep](#)
[iPad holds your baby back](#)
[Smartphones, mental illness](#)
[Toddlers, iPads, development](#)
[Parental addiction affects kids](#)
[iPad addiction, ability to use blocks](#)
[Students worse on exams, digital devices](#)

[Dr. Victoria Dunkley: Child Psych., Wireless Risks](#)

[Dr. Yael Stein Children, Wireless, Health](#)

[Dr. Erica Mallery-Blythe: EMF Radiation, Children](#)

[Dr. Devra Davis: Insufficient Research](#)

Autism

[EMF and Thinking](#)
[EMF and the Brain](#)
[Melatonin and EMF](#)
[Lifetime Exposures](#)
[EMF and Fertility](#)
[Technology Addiction](#)
[Electrohypersensitivity](#)
[EMF, Physiologic Water](#)
[EMF, Prenatal Exposures](#)

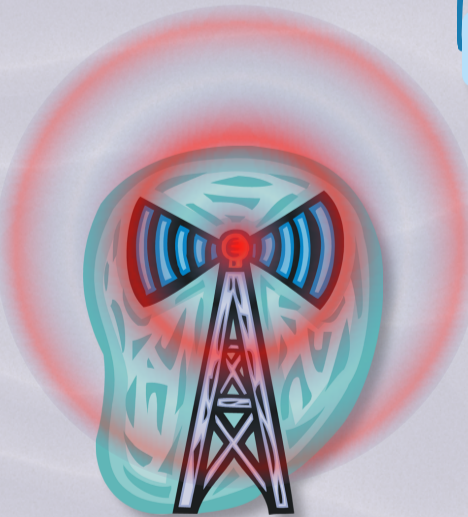
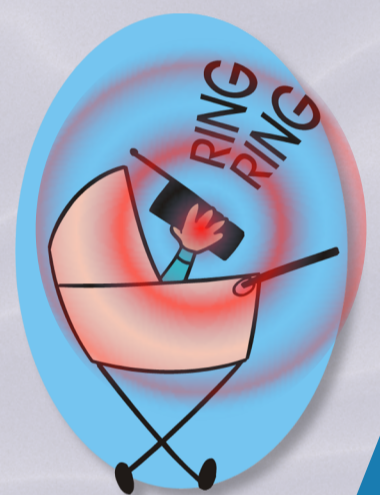
[Turn it Off 4 Kids](#)

Related Maps

[Wireless Free Bedroom](#)

EMF SAFE HOME

Reduce personal exposures before conception.
Clean home of wiring, grounding faults.
Avoid exposures during pregnancy.
Consider minimizing ultrasound exposures.
Use wired baby monitors, intercoms.
Do not let a child play with cellphone, wireless toy.
Used corded phones and computer modems.
Make the bedroom a low EMF area.
Avoid wireless video games.



Articles

[What's in WiFi?](#)
[Toddlers already pros](#)
[Elephant in the Nursery](#)
[Laptop EMF and children](#)
[Sensitivity of children to EMF](#)
[EMFs and childhood leukemia](#)
[Smarter or dumber children?](#)
[WiFi: Thalidomide in the making?](#)
[Tech Addiction: Kids not Alright](#)
[Dr. Johansson on Swedish Schools](#)
[When screens harm our children](#)
[Parents pull kids from school, tower](#)
[Depression related to screen time](#)
[Canadian Teachers Union: Ban WiFi](#)
[Cellphones and Health Issues, Children](#)
[1/3 babies use phones before walk, talk](#)
[Techy holiday gifts, children's cancer risk](#)
[Yes, the Children More Exposed than Adults](#)
[YouTube: Kids, Virtual Reality, phones, EMF](#)

[Doctors Warn Against School WiFi](#)

[Israel Limits WiFi for Children](#)

[WiFi in Schools, Studies](#)

[Safe and Smart for Kids](#)

[WiFi in Schools](#)

SYMPTOMS

Headaches
Fatigue
Sleep disorders
Agitation, anxiety
Behavioral disorders
Learning disorders
Skin rashes



[Amer. Academy of Pediatrics: Reduce Children's Exposure](#)

[Dr. Klinghardt's Advice for Young People](#)

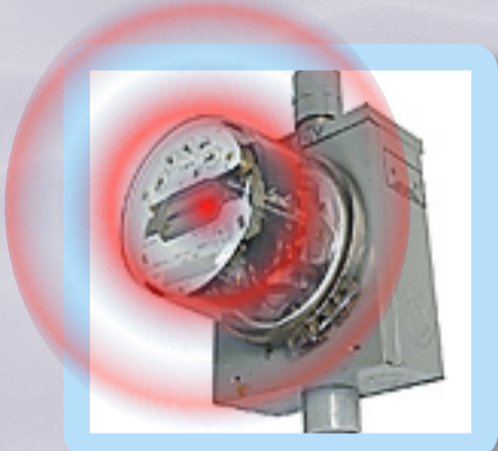
[Reykjavik Appeal to stop school wireless](#)

Schools, Money

[Safe Schools](#)
[Audio: WiFi in Schools](#)
[Letter from Dr. Martha Herbert](#)
[EMF, high performance schools](#)
[Smart Boards, smart classroom](#)
[Teach students safe cellphone use](#)
[Israel, documentary, school ban](#)
[WiFi too dangerous, German Schools](#)
[Cellphone towers in schoolyards, outrage](#)
[Gates, world's largest charity, edu-tech grants](#)

Studies

[Behavioral difficulties](#)
[Heart rate variability](#)
[Neonatal melatonin, MF](#)
[Childhood leukemia, ELF](#)
[Childhood leukemia, EMF](#)
[RF exposures, head tissues](#)
[Embryonic development, cell phone](#)
[Technology, distraction, performance](#)
[Leukemia cluster, radio tower, Hawaii](#)
[Mobile phone use, symptoms in children](#)
[MW, postnatal, spinal cord impairments](#)
[Cellphone use, stress, HPA axis changes](#)
[Self-reporting, well-being, children, China](#)
[Why children absorb more MW than adults](#)
[iPad affects muscle and bone development](#)
[Cognitive, behavioral effects, 10-yr. old boys](#)
[Childhood leukemia, radio transmitter, Vatican](#)
[Maternal mobile phone use, damaged neurons](#)
[Smartphone integrated infant markers, market](#)
[MW, neonatal incubators, caution recommended](#)



WiFi

[WiFi dangers, links](#)
[WiFi in Schools \(page\)](#)
[YouTube: WiFi, British](#)
[FOX 5: WiFi in Schools](#)
[WiFi in Schools Concerns](#)
[YouTube: Dr. Havas, WiFi](#)
[Dr. Havas: WiFi in Schools](#)
[YouTube: BBC, WiFi, Part 2](#)
[WiFi making your child ill?](#)
[Report: Md. schools, WiFi](#)
[WiFi in Schools: The Facts](#)
[Barrie Trower: Risking Future](#)
[Smart locks in Calif. schools](#)
[3X as much radiation as towers](#)
[YouTube: Measuring WiFi EMF](#)
[Obama Plan to Bring WiFi to All Schools](#)

NATIONAL DATABASE

Data on children are now being collected wirelessly. In addition to health concerns of EMF, privacy issues are developing.

[Students think phones are harmful to them](#)

[WiFi Tech Smart Crib?](#)
[Smart watches](#)
[Smart baby bottles](#)
[Wearable Tech risks](#)
[Smart PJs for Children?](#)
[20 "smart" baby products](#)

[What Every Parent Needs to Know](#)

