

Parents and grandparents today have not had a lifetime of artificial EMF exposure, but children today cannot escape it. This map describes some of the risks specific to infancy and childhood and offers links to some precautionary steps parents may take.

[Kids and robot siblings](#)

Articles

- [Toddlers already pros](#)
- [Elephant in the Nursery](#)
- [Laptop EMF and children](#)
- [Smarter or dumber children?](#)
- [Tech Addiction: Kids not Alright](#)
- [When screens harm our children](#)
- [Depression related to screen time](#)
- [WiFi: Thalidomide in the making?](#)
- [Dr. Johansson on Swedish Schools](#)
- [Parents pull kids from school, tower](#)
- [Canadian Teachers Union: Ban WiFi](#)
- [Cellphones and Health Issues, Children](#)
- [Techy holiday gifts, children's cancer risk](#)
- ★ [Virtual Reality, Children's Brain, Eyes](#)
- [1/3 babies use phones before walk, talk](#)
- ★ [Screen time and behavioral symptoms](#)
- [YouTube: Kids, Virtual Reality, phones, EMF](#)

★ [Screen Time, Digital Drug](#)

[Doctors Warn Against School WiFi](#)

[What Every Parent Needs to Know](#)

[Israel Limits WiFi for Children](#)

[WiFi in Schools, Studies](#)

[Safe and Smart for Kids](#)



★ [Children and EMFs: What You Need to Know](#)

BioInitiative 2017

[Children's Health](#)
[Children, Neurodevelopment](#)

BioInitiative 2012

- ★ [Autism](#)
- ★ [Genotoxic Effects](#)
- ★ [Childhood Cancers](#)
- ★ [Fetal, Neonatal Effects](#)
- ★ [Section 9: Neurology, Behavior](#)

SYMPTOMS

- [Headaches](#)
- [Fatigue](#)
- [Sleep disorders](#)
- [Agitation, anxiety](#)
- [Behavioral disorders](#)
- [Learning disorders](#)
- [Skin rashes](#)

Risks

- [Brain cancer](#)
- [A Child's Brain](#)
- [EMF and ADHD](#)
- [Cancer, mental health](#)
- [Poor sleep, less sleep](#)
- [Toddler iPad Addiction](#)
- [iPad holds your baby back](#)
- [Smartphones, mental illness](#)
- [Toddlers, iPads, development](#)
- [Parental addiction affects kids](#)
- [iPad addiction, ability to use blocks](#)
- [Students worse on exams, digital devices](#)



[Organizations Against School WiFi](#)

[Ban Handheld Devices for Children](#)

[Dr. Belpomme: Children and EMF](#)

[5G: Next Great Experiment on Children](#)

★ [5G Bad for Children](#)

[Protect Your Kids](#)

[Exposure Guidelines](#)

Home: [Oscillatorium](#)
Newest version [this map](#)
Date of this update: 02-12-20

FACTORS IN VULNERABILITY

- Lower body weight
- Thinner skull
- Less efficient blood brain barrier
- Developing nervous system
- Greater water content of tissues
- Longer exposure over lifetime

COMMON CHILDHOOD EXPOSURES

PRENATAL, NEONATAL EXPOSURES
Prenatal ultrasound
Parent's use of wireless communication
Infant monitoring devices, incubators

HOME RADIOFREQUENCY EXPOSURES
DECT phones, wireless computers, etc.
Smart meters and appliances
WiFi, wireless games and toys

HOME MAGNETIC, ELECTRICAL EXPOSURES
Power Lines, transformers
Dirty electricity
Wiring errors, ungrounded circuits
Appliances, transformers, chargers, motors
Automobile mixed, often strong fields

SCHOOL ALL EMF EXPOSURES
Wiring errors
Dirty electricity
Lighting fixtures
WiFi, mobile devices, smart boards
Cell towers and antennas
RFID tracking devices
Electrical switching rooms, elevators, motors

COMMUNITY EXPOSURES
Smart grid meters, collectors
Cell towers and antennas, stores
WiFi hot spots
Mobile communication devices
Scanners

★ [Dr. Andrew Goldsworthy](#)
[School Wireless Environment](#)

★ [Dr. Jason Bawden-Smith:](#)
[EMFs and Children's Brains](#)

[Dr. Victoria Dunkley:](#)
[Child Psych., Wireless Risks](#)

[Dr. Yael Stein](#)
[Children, Wireless, Health](#)

[Dr. Devra Davis:](#)
[Insufficient Research](#)

- [Autism](#)
- [EMF and Fertility](#)
- [EMF and Thinking](#)
- [EMF and the Brain](#)
- [Melatonin and EMF](#)
- [Lifetime Exposures](#)
- [Technology Addiction](#)
- [Electrohypersensitivity](#)
- [EMF, Physiologic Water](#)
- [EMF, Prenatal Exposures](#)

Related Maps

EMF SAFE HOME

- Reduce personal exposures before conception.
- Clean home of wiring, grounding faults.
- Avoid exposures during pregnancy.
- Consider minimizing ultrasound exposures.
- Use wired baby monitors, intercoms.
- Do not let a child play with cellphone, wireless toy.
- Used corded phones and computer modems.
- Make the bedroom a low EMF area.
- Avoid wireless video games.

WiFi

[WiFi dangers, links](#)

[WiFi in Schools \(page\)](#)

[YouTube: WiFi, British](#)

[WiFi in Schools Concerns](#)

[YouTube: Dr. Havas, WiFi](#)

[WiFi making your child ill?](#)

[Dr. Havas: WiFi in Schools](#)

[YouTube: BBC, WiFi, Part 2](#)

[WiFi in Schools: The Facts](#)

[Smart locks in Calif. schools](#)

[Barrie Trower: Risking Future](#)

[3X as much radiation as towers](#)

[YouTube: Measuring WiFi EMF](#)

[Obama Plan to Bring WiFi to All Schools](#)

★ [Schools replace WiFi with Wired Internet](#)

[Turn it Off 4 Kids](#)

[Wireless and Children](#)

[Wireless Free Bedroom](#)

Schools

[Safe Schools](#)

[Audio: WiFi in Schools](#)

[Letter from Dr. Martha Herbert](#)

[EMF, high performance schools](#)

[Israel, documentary, school ban](#)

[Smart Boards, smart classroom](#)

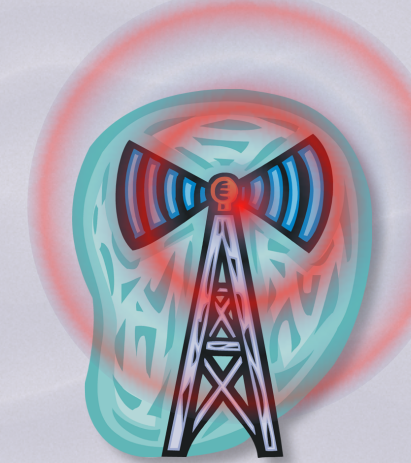
[Teach students safe cellphone use](#)

[WiFi too dangerous, German Schools](#)

[Cellphone towers in schoolyards, outrage](#)

[Gates, world's largest charity, edu-tech grants](#)

★ [Students learn more from books than screens](#)



Studies

[Cognitive changes](#)

[Heart rate variability](#)

[Behavioral problems](#)

[Behavioral difficulties](#)

[Neonatal melatonin, MF](#)

[Childhood leukemia, ELF](#)

[Childhood leukemia, EMF](#)

[RF exposures, head tissues](#)

[EMFs and childhood leukemia](#)

[Embryonic development, cell phone](#)

[Technology, distraction, performance](#)

[Leukemia cluster, radio tower, Hawaii](#)

[Mobile phone use, symptoms in children](#)

[MW, postnatal, spinal cord impairments](#)

[Cellphone use, stress, HPA axis changes](#)

[Self-reporting, well-being, children, China](#)

[Why children absorb more MW than adults](#)

[iPad affects muscle and bone development](#)

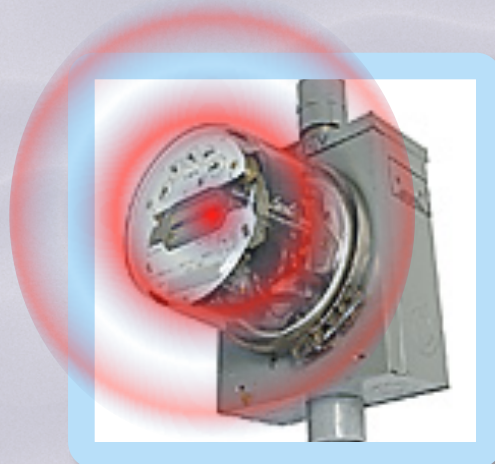
[Cognitive, behavioral effects, 10-yr. old boys](#)

[Childhood leukemia, radio transmitter, Vatican](#)

[Smartphone integrated infant markers, market](#)

[Maternal mobile phone use, damaged neurons](#)

[MW, neonatal incubators, caution recommended](#)



[Amer. Academy of Pediatrics:](#)
[Reduce Children's Exposure](#)

[Dr. Klinghardt's Advice](#)
[for Young People](#)

[Reykjavik Appeal to](#)
[stop school wireless](#)



★ [Childhood Brain Tumor Study](#)

[WiFi Tech](#)
[Smart Crib?](#)
[Smart watches](#)
[Smart baby bottles](#)
[20 "smart" baby products](#)

[Dr. Erica Mallery-Blythe:](#)
[EMF Radiation, Children](#)

★ [Dr. Erica Mallery-Blythe:](#)
[Children, Cancer, EMF](#)