

Anthropogenic EMF has bio-effects associated with blood glucose metabolism in many people and animals. Some of the effects may be interpreted as adverse and some as "beneficial" -- depending on the study design and questions as well as the desired exposure outcome, if any. Permeability of the blood-brain barrier, cell proliferation, or angiogenesis are examples of effects which may be desired for pharmaceutical delivery or wound healing, but undesired where tumors have been diagnosed. Therapeutic EMF uses controlled exposures, but the dense artificial EMF atmosphere in which we are forced to live is far from controlled.

This map links studies and articles about EMF effects on blood glucose and insulin levels and functions. The viewer is free to draw his/her own conclusions.

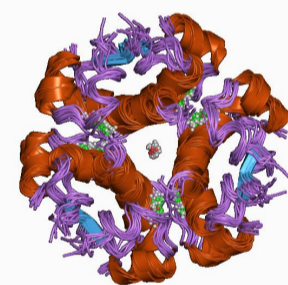
EMF AND DIABETES

EMF AND DIABETES: THE EVIDENCE



★ [CALCIUM AND INSULIN RELEASE](#)

★ [SEE MAP: CALCIUM EFFLUX](#)



Human Insulin

Adverse Effects

- Reduced insulin response
- Increased fasting blood sugar
- Increased HbA1c
- Diabetes Type II
- Diabetes Type III
- Diabetes hard to manage
- Pumps and monitors malfunction
- Pumps attacked by cyber-bugs

"Beneficial" Effects

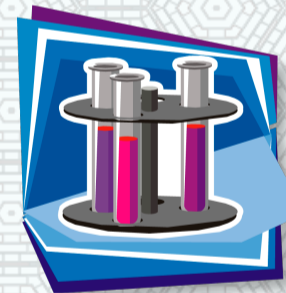
- Cell proliferation
- Granulation tissue
- Collagen deposition
- Angiogenesis
- Keratinocyte proliferation
- Myofibroblast proliferation
- Leukocyte-endothelial interactions
- Monocyte stimulation
- Faster wound healing rate
- Altered membrane responses
- Altered muscle contractions
- Pain relief

[DR. HAVAS: DIABETES AND ELECTROSENSITIVITY](#)

[VIDEO: DR. MAGDA HAVAS DIRTY ELECTRICITY, DIABETES](#)

Home: [Oscillatorium](#)
Newest version [this map](#)
Date of this update: 10-18-17

Studies: Adverse Effects



Studies: "Beneficial" Effects

Articles

- [EMF, diabetic disasters](#)
- [Earthing reduces diabetes](#)
- [Blood sugar changes, EMF](#)
- [Could EMF cause diabetes?](#)
- [Dr. Havas: Type III diabetes](#)
- [Tower Radiation and Diabetes](#)
- [Electropollution and diabetes III](#)
- [Dr. Havas page: Diabetes, EMF](#)
- ★ [Electropollution, type III diabetes](#)
- [Reducing dirty electricity to treat diabetes](#)

[ELF attenuates insulin](#)

★ [RF, insulin altered](#)

[Fasting sugar, cell phones](#)

[Comments to tower-HbA1c study](#)

[Dirty electricity, brittle diabetes, EHS](#)

[Cell towers, HbA1c, Type II diabetes](#)

[Insulin response decreased, MF exposure](#)

[ELF-MF affects diabetic rats, not their BBB](#)

[Response to comments, tower-HbA1c study](#)

★ [MW, glucose elevation in 40 YO type I male](#)

★ [RF, oxi stress, glucose metabolism, olive leaf](#)

[TENS helps neuropathic pain](#)

[ELF, reduced insulin from tumor](#)

[TMR, diabetic postsurgical healing](#)

[EMF-MF, insulin, BBB permeability](#)

[PEMF, microcirculation, ischemic injury](#)

[EMF-MF assists diabetic wound healing](#)

[Pulsed EMF assists diabetic wound healing](#)

[FREMS, transient neuropathy pain reduction](#)

[PEMF, vascular muscle membrane potential](#)

[ELF-MF, contractile force of muscles altered](#)

[Meta-analysis, EMF therapy, studies designed poorly](#)

[PHONES USED TO MANAGE DIABETES?](#)

[INSULIN PUMP CYBER-BUG](#)

[GLUCOSE?](#)

[CHART OF EMF DEVICES, AFFECTED IMPLANTED PUMPS, GLUCOSE BIOSENSORS](#)

[GLUCOSE MONITOR ACCURACY AFFECTED BY GSM RF-EMF](#)

★ [INSULIN PUMPS MAY BE AFFECTED BY EMF](#)

[GLUCOSE BIOSENSORS USING EMF](#)

[Chip with RF resonator](#)

[Nanomagnetic biosensor](#)



blue = more common in Type 1