

THE EVOLUTIONARY OSCILLATORY AND NONLINEAR SEQUENCING ACTIVITIES OF OUR CELLS AND THEIR ORGANELLES MAY BE ALTERED BY ARTIFICIAL EMF EXPOSURES. THIS IS PARTICULARLY TRUE AT CARRIER FREQUENCIES (OR MODULATIONS) NEAR BIOLOGICAL FREQUENCIES. ABERRANT PHYSIOLOGY IS LIKELY TO BE A CONSEQUENCE, SOONER OR LATER.

IN ADDITION, THE BURSTS, PULSATIONS, PEAKS AND OTHER NON-RHYTHMIC EMF TRANSMISSIONS STARTLE THE CELL AND INDUCE PHYSIOLOGIC RESPONSES. THESE EVENTS DIVERT FUNCTION AND USE RESOURCES. LIVING SYSTEMS ARE ROBBED OF EVOLUTIONARY VITALITY. THIS MAP LINKS ALL MAPS TOUCHING ON THIS CONCEPT.

MAP INDEX:
TOPICS PERTINENT
TO
TIMING PHYSIOLOGY
AND
UNNATURAL EMF
(PULSATIONS, HARMONICS, DATA-CARRYING MODULATIONS, DISTORTIONS)

**SYMPTOMS OF EMF-INDUCED
ABERRANT PHYSIOLOGIC
TIMING AND/OR RESPONSE**

- Alterations in EEG observations
- Alterations in EKG observations
- Altered neuronal excitability, firing patterns
- Forced resonance, entrainment
- Circadian physiology altered
- Sleep architecture distorted
- Hormonal cascades altered
- Inflammatory cascades altered
- ANS rhythms altered
- Calcium efflux, water phases altered
- Disturbed macro behaviors, migration, orientation
- more...

Home: [Oscillatorium](#)
Newest version [this map](#)
Date of this update: 03-17-17

[EMF AND MEMBRANE OSCILLATIONS](#)

[MILLIMETER WAVES, 5G, OUR BODIES](#)

[EMF AND MITOCHONDRIA](#)

[CALCIUM EFFLUX](#)

[EMF AND INTERFACIAL WATER](#)

[CALCIUM, WATER, MEMBRANES, EMF](#)

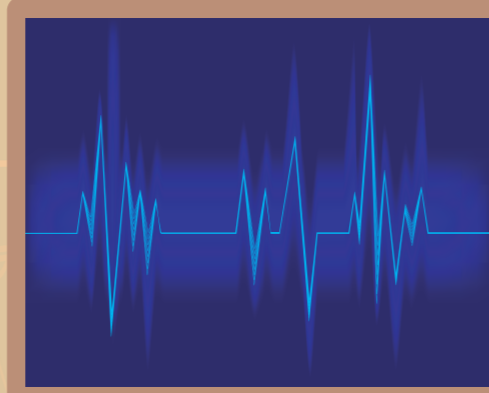


[INTERACTION OF EMF AND TOXINS](#)

[ELECTRIC FIELDS](#)

[BODY VOLTAGE](#)

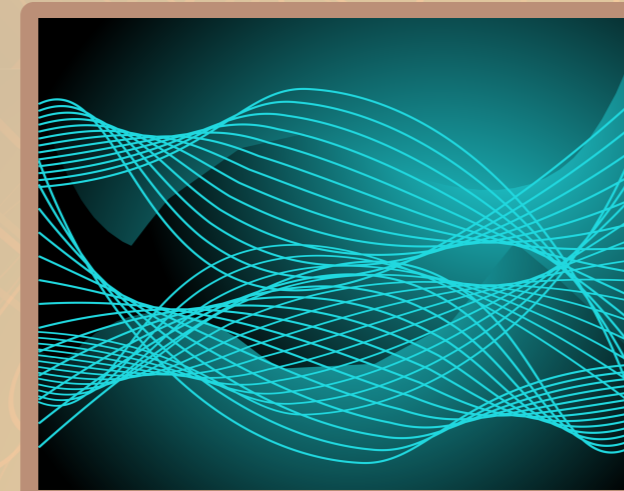
[DIRTY ELECTRICITY](#)



[NONLINEARITY IN EMF RESPONSES](#)

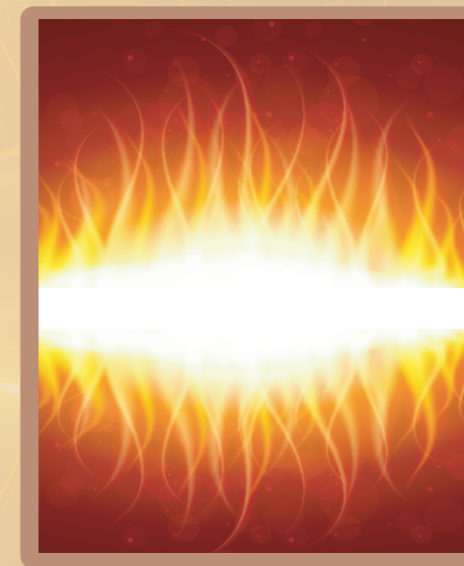
[EMF AS A TIMING STRESS](#)

[BIO-ACTIVE MODULATION](#)



[EMF AND MAGNETITE](#)

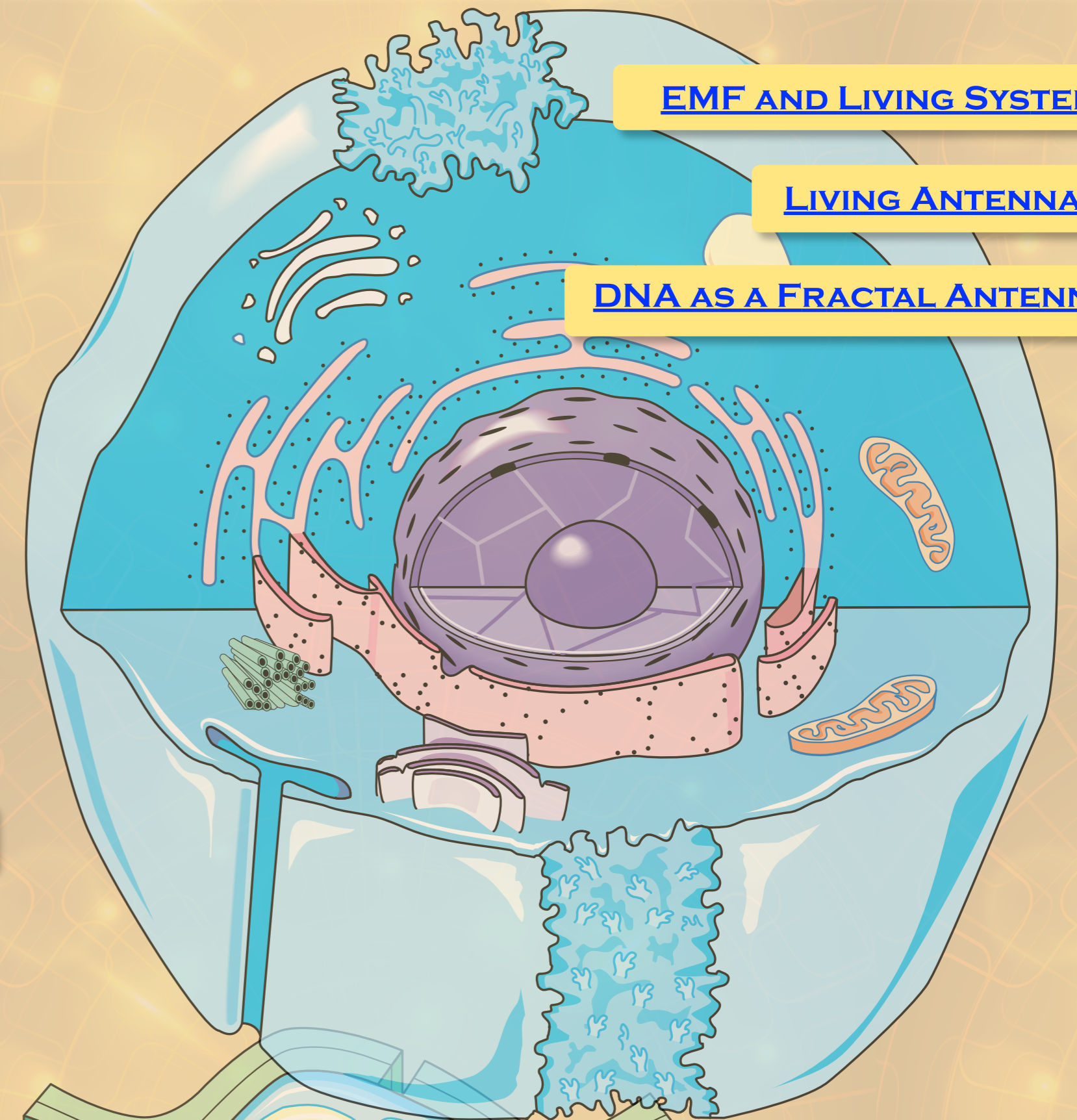
[EMF AND CRYPTOCHROME](#)



[EMF AND LIVING SYSTEMS](#)

[LIVING ANTENNAS](#)

[DNA AS A FRACTAL ANTENNA](#)



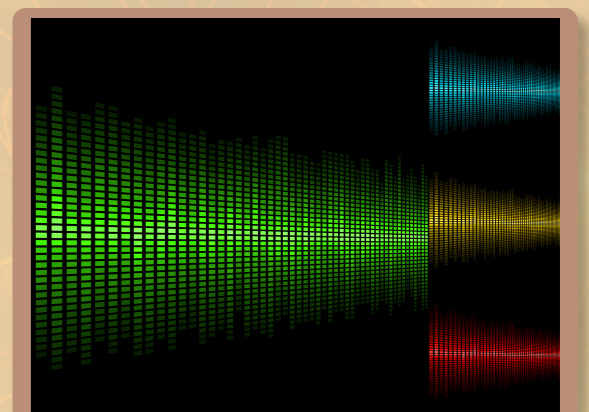
[EMF AND THE CENTRAL NERVOUS SYSTEM](#)

[EMF AND THE AUDITORY SYSTEM](#)

[EMF AND MELATONIN](#)

[EMF AND SLEEP DISRUPTIONS](#)

[EMF AND EEG](#)



[BIO-SENSORS AND EMF](#)