

NON-IONIZING ELECTROMAGNETIC FIELDS PERMEATE OUR INDOOR AND OUTDOOR ENVIRONMENTS. WE ARE EXPOSED TO FIELDS HUNDREDS OF MILLIONS OF TIMES STRONGER THAN THOSE IN WHICH WE EVOLVED. WE ARE ALL AFFECTED BY THIS EMF WHETHER WE FEEL SYMPTOMS OR NOT.

WHAT PARTS OF OUR BODIES ARE AFFECTED BY EMF? IT DEPENDS ON WHERE YOU LOOK, WHETHER YOU USE AN ELECTRON MICROSCOPE, AN EKG, AN EEG, OR A QUESTIONNAIRE.

THIS MAP IS AN INDEX TO THE MAPS POSTED AT WWW.OSCILLATORIUM.COM MOST SPECIFICALLY RELATED TO MECHANISMS.

[EMF BIO-EFFECTS PROPOSED MECHANISMS](#)

[HORMESIS EFFECT OF EMF RESPONSES](#)

[NON-LINEARITY OF EMF RESPONSES](#)

[EMF AND THE MULTIPLE-HIT MODEL](#)

[EMF BIO-EFFECTS OVERVIEW](#)



[A PHYSIOLOGIC TIMING STRESS](#)

[BIOACTIVE MODULATION](#)

[EMF EFFECT ON THE BRAIN](#)

[EFFECT ON CRYPTOCHROME](#)

[MELATONIN HYPOTHESIS](#)

[EFFECT ON MAGNETITE](#)

[EMF, AUTISM, NEURODEVELOPMENTAL EFFECTS](#)

[ANS: CARDIOVASCULAR AND AUTONOMIC EFFECTS](#)

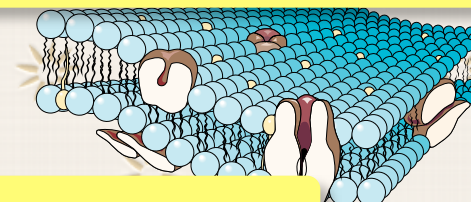
[CNS: NEURODEGENERATIVE, NEUROINFLAMMATORY EFFECTS](#)

[FREE RADICAL DAMAGE](#)



[EFFECT ON DNA AND RNA](#)

[EFFECT ON MEMBRANE OSCILLATIONS](#)



[CALCIUM EFFLUX EFFECT](#)

[EFFECT ON MITOCHONDRIA](#)



[EFFECTS OF EMF ON WATER IN TISSUES](#)

[EFFECTS OF EMF ON INTERFACIAL WATER](#)

[EFFECTS OF EMF ON CELLS, TISSUES](#)

[EMF AND INFLAMMATION](#)

[EMF AND THE IMMUNE SYSTEM](#)

[EMF AND THE BLOOD](#)

[EMF, FERTILITY](#)

[BODY VOLTAGE](#)

[THERAPEUTIC EMF](#)

LAYERS OF EFFECTS

- Molecular bonds
- Ion distribution gradients in fluids, cytoplasm
- Fluid resonance
- Structural resonance, antenna functions
- DNA and RNA integrity, methylation
- Matrix proteins, expression, release
- Membrane oscillations, receptor functions
- Circadian, natural rhythm disruptions
- Most cellular organelles
- Whole cell field orientation by shape
- Cell group behaviors, neuronal thresholds
- Tissue structural integrity
- Cognitive and behavioral functions
- Neurodevelopmental processes
- Aging processes
- Tumor development and immune behaviors

**MAP INDEX:
TOPICS PERTINENT
TO
BIO-EFFECTS
MECHANISMS**

Home: Oscillatorium
Newest version [this map](#)
Date of this update: 06-03-16