

HOW DOES EMF AFFECT OUR CELLULAR AND INTRACELLULAR MEMBRANES AND OTHER PHYSIOLOGIC BARRIERS? IN ATTEMPTING TO ANSWER THIS QUESTION, WE NEED TO ADDRESS SOME OF THE FUNDAMENTAL QUESTIONS IN PHYSIOLOGY. HOW DO MEMBRANES FUNCTION? DOES INTRACELLULAR ACTIVITY DIRECT MEMBRANE FUNCTION OR DO MEMBRANES DIRECT INTRACELLULAR ACTIVITIES? DOES CALCIUM EFFLUX ALTER INTERFACIAL WATER BEHAVIOR OR DO PHASE CHANGES IN WATER FORCE CALCIUM TO ENTER THE CELL? HOW DOES COMPLEX, ARTIFICIAL, MODULATED, VARYING EMF AFFECT THESE FUNCTIONS?

THIS MAP INDEXES OTHER MAPS AT WWW.OSCILLATORIUM.COM WHICH DISCUSS MEMBRANES AND PHYSIOLOGICAL BARRIERS IN RELATIONSHIP TO NON-IONIZING ELECTROMAGNETIC FIELD EXPOSURES.

MAP INDEX:
TOPICS PERTINENT
TO
**MEMBRANE
AND
BARRIER HEALTH**

MEMBRANE/BARRIER EFFECTS:

- Oxidative, nitrosative stress*
- Ion cyclotron resonance*
- Alterations of ion movement*
- Alterations in water phase changes*
- Magnetic fields pull on receptors*
- Membrane enzyme dysfunctions*
- Endothelial membrane channel changes*
- Alterations of synaptic timing*
- Alterations of oscillatory activity*

Home: Oscillatorium
Newest version [this map](#)
Date of this update: 01-06-18

[EMF, MEMBRANES, OSCILLATIONS](#)

[MILLIMETER WAVES, 5G](#)

[BIOACTIVE MODULATION](#)

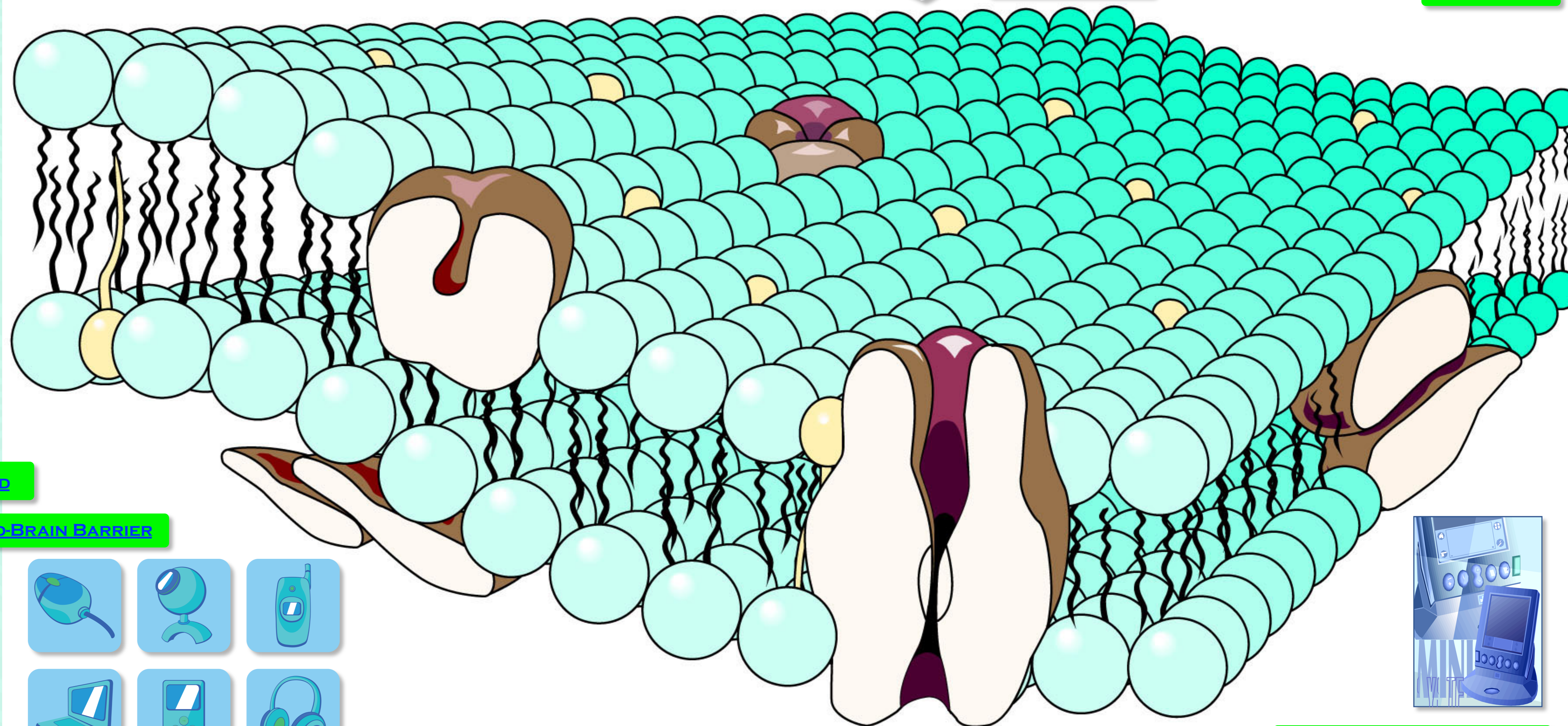


[BODY VOLTAGE](#)

[NONLINEARITY IN EMF RESPONSES](#)

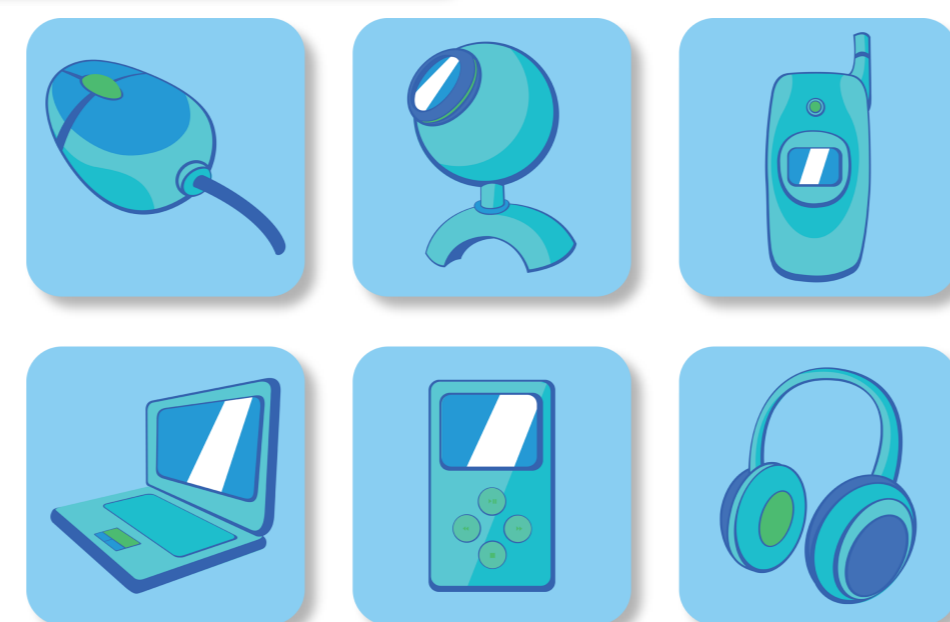
[BIO-EFFECTS OVERVIEW](#)

[HORMESIS](#)



[EMF AND THE BLOOD](#)

[EMF AND THE BLOOD-BRAIN BARRIER](#)



[EMF AND PORPHYRINS](#)

[EMF AND THE MITOCHONDRIA](#)

[EMF AND CALCIUM EFFLUX](#)

[EMF AND INTERFACIAL WATER](#)

[EMF, WATER, CALCIUM, MEMBRANES](#)

[OVERVIEW: EMF, CELLS AND TISSUES](#)

[OVERVIEW: EMF, INTRACELLULAR STRUCTURE](#)

[FREE RADICAL PRODUCTION, EMF](#)