

WIRELESS PHONES ARE USED EVERYWHERE: IN MOST HOMES, VEHICLES, WORKPLACES AND PUBLIC SPACES. THE VISIBLE SUPPORTING INFRASTRUCTURE AND INVISIBLE RADIATION EMITTED BY CELLPHONES (AND OTHER MOBILE COMMUNICATION TECHNOLOGIES) AND ANTENNAS FILL LANDSCAPES THROUGHOUT THE WORLD.

IF THESE DEVICES ADVERSELY AFFECTED ONLY THE PEOPLE WHO HANDLED THEM, THAT WOULD BE SERIOUS ENOUGH. BUT THEY AFFECT US ALL -- OUR HEALTH, OUR ENVIRONMENT, OUR SOCIAL STRUCTURES.

THIS MAP IS A LINKED INDEX TO ALL THE MAPS POSTED AT WWW.OSCILLATORIUM.COM ON SUBJECTS RELATED TO WIRELESS PHONES -- NOT LIMITED TO THE EMF EFFECTS..

MAP INDEX: TOPICS PERTINENT TO THE PHONE

UBIQUITOUS CELL PHONES

- Devices/base stations emit harmful EMF
- Towers/antennas emit harmful EMF
- Made of non-renewable fossil fuels (plastics)
- High carbon and water footprints to produce
- Mining rare earths harms people
- Mining rare earths harms environment
- Component chemicals may harm users
- Planned obsolescence, poor recycling
- Toxins leached out of landfills
- Loss of cognitive and social skills in users
- Loss of environmental awareness of users
- Addiction to the technologies
- Loss of the wireless commons (safe spaces)



[WIRELESS IS NOT GREEN](#)

[ENVIRONMENTAL COSTS OF MOBILE DEVICES](#)



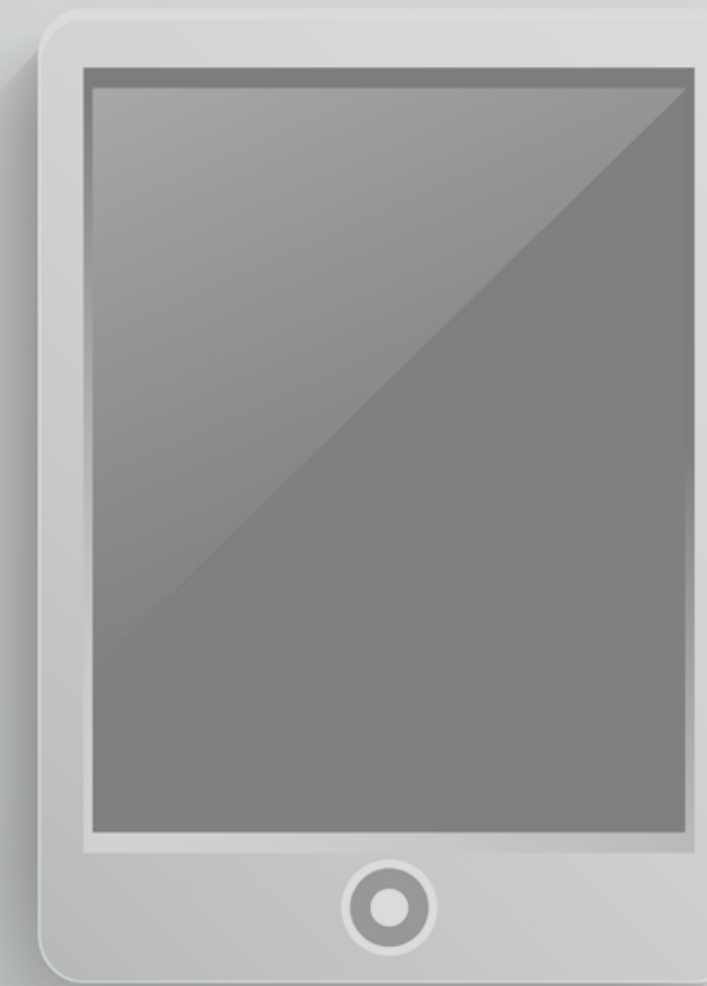
[ELECTRO-HYPERSENSITIVITY](#)

[LIFETIME EXPOSURES](#)

[CELL TOWERS AND WIRELESS TELECOMMUNICATIONS FACILITIES](#)

[ANTENNA ILLNESS CLUSTERS](#)

[TRAGEDY OF WIRELESS COMMONS](#)



[INTERACTION OF EMF AND TOXINS](#)



[LIVING SYSTEMS](#)

[BIO-EFFECTS OVERVIEW](#)



[OVERVIEW OF EMF AND ENVIRONMENT](#)

[EMF AND THINKING](#)

[TECHNOLOGY ADDICTION](#)

[TECHNOLOGY AND THE MEDIATION OF LIFE](#)



Home: [Oscillatorium](#)
Newest version [this map](#)
Date of this update: 01-02-16